

- 1 Cautions
  - Warnings
  - Hint
- 2 Features.....2
- 3 Check before Use
  - Surface and Features of the Buttons
  - Features of the Remote
- 4 Operation of the Monitor....6
  - Specification of the Monitor
  - Support Display Mode
  - Open/Close Monitor
  - Auto Display for Backing a Car
  - Auto Switch for Power
  - ON-OFF Control for Car PC
  - Reset Control for Car PC
- 5 Operation of the Touch Panel..9
  - Cautions
  - Install of the CD Drive
  - Calibration of the Touch Panel
  - Set of the Languages
  - Set of the Touch Panel Function
- 6 Basic Function .....15
  - On-Off
  - Mute Control
  - Display Select
  - Volume Adjust
  - Sound Control
  - Volume Mode Select
  - PC ON-OFF
  - PC Reset
- 7 Radio TUNER.....17
  - Wave Band Select
  - Auto Tuner
  - Manual Tuner

- Auto Set Memory Broadcast in Advance
- Manual Set Memory Broadcast in Advance
- Display Set Memory Broadcast in Advance
- 8 Operation of the Menu.....21
  - AV State
  - VGA State
  - Radio State
- 9 Connect of the Facility .....25
  - Cautions
  - Graphic Connect of Facility
  - Connect of Backing Control
  - Connect of Car PC
- 10 Specification.....30
  - AM Part
  - FM Part
  - Audio Part
  - Monitor Part
  - Common Condition
- 11 Install of the Machine... 32
  - Cautions
  - Use Cabinet-Bucket to Install
  - Use Shelf Install

- Warn
  - 1、 Used in the Car with 12V not in the Truck or Bus with 24V
  - 2、 Don't Install the Machine in the Place where will Obstruct Driver's Sight or Impact Driver's Operation.
  - 3、 Don't watch the Movie to avoid the traffic accident for being Distracted Attention when Driving.
  - 4、 Don't Dismantle or Adjust any Parts Because consisting of High Rigid Parts. Please Contact with Factory or Local Agency if any Problem
  - 5、 Don't Place Products and Amplifier and Speaker to be on too much Moist or Washy Environment to avoid fire or other Damage for Short Circuit.
  - 6、 Don't be Suffered Strong Impact to Avoid Damage of the Frame Part.
  - 7、 Don't Replace the Fuze of the Attached Power with Unmerited Fuze to Avoid Fire or Burned-out of Machine
  - 8、 Stop Operating the Machine if no Sound, Image or to be of Water and Little Object or Fume, Peculiar Smell to Avoid Fire or other Accident.
  - 9、 Don't Touch the Screen by Hard Object to Avoid Scrape the Screen.

- Hint
  - 1、 Use the Soft or Neuter Cleanser if any Smudge in the Screen.
  - 2、 Open the Air condition to Reduce the temperature if the car expose to sunshine too Long.
  - 3、 Don't operate the Machine when some Dew in the goods after using heating equipment for cold weather
  - 4、 Adjust the Volume to appropriate Range to Hear the emergent Call.
  - 5、 Clean the Products Termly for Foul and Dusty Environment.
  - 6、 The illustration and Screen Display in the Manul Operation is to Show How to Opearte Distinctly. So the Screen Display in illustration will be Different with the Actual Display in the Machine and maybe Some Operations can't be come ture in Fact.
  - 7、 Operate the Products according to the Manual Operation. Nonlicet Operation will be without Guarantee to Repair

## Features

### TFT-LCD Monitor:

- Car TFT-LCD Panel
- High Resolution: 800X480XRGB
- High Brightness: 450cd/m
- High Contrast: 400
- Wide Visual Angle:
  - Up >70°C
  - Down >70°C
  - Left >70°C
  - Right >70°C

- Long Life Back Light: » 10000 hours

- Range of working Temperature:
  - 30°C to +80°C

### Touch Panel:

- Simulate resistance touch panel with high resolution: 2048X2048。
- Long Life: 120000 times (Touch)
- High Euphotic Rate: » 85%

### AM/FM:

- High Sensitive Ratio:
- High SNR:
- 200pcs Broadcast Deposited (each 100pcs for AM、FM)
- Auto and Manual Search
- Support Multi-radio system

### Inner USB2.0 port:

- High Speed USB2.0 Port
- Inner safeguard Apparatus when

Exceed Current

2

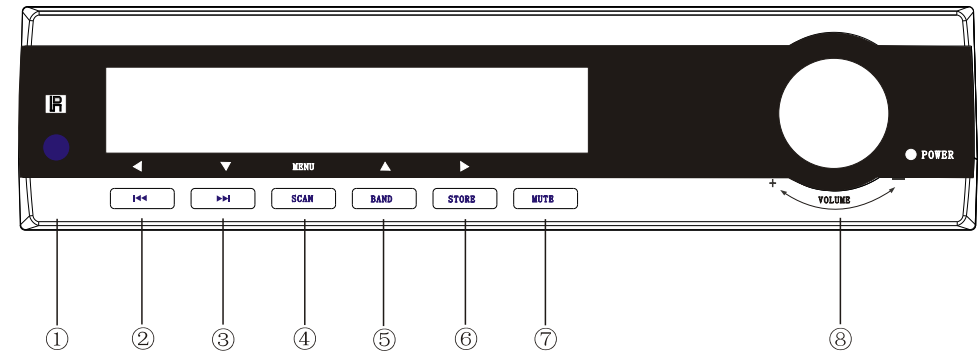
### VGA Port:

- Support Multi-Mode: 1024X768
- Support S0G Mode
- Support Non-standard Mode, Such as 800X480

## Operation of Buttons and Remote

### Appearance and Features of the Buttons:

#### Features of the Front Buttons:



- ①: Remote Window;

- ②: Reset Button:

Panel is Closing: Radio Channels "-"

Panel is Opening: Menu "-"

- ③: Reset Button:

Panel is Closing: Radio Channels "+"

Panel is Opening: Menu "Down"

- ④: Reset Button:

Panel is Closing: Manual Search for Radio

Panel is Opening: Menu

- ⑤: Reset Button:

Panel is Closing: Wave Band Switch

Panel is Opening: Menu "Up"

- ⑥: Reset Button:

Panel is Closing: Storage of Radio

Panel is Opening: Menu "+"

- ⑦: Mute

- ⑧: Reset Switch:

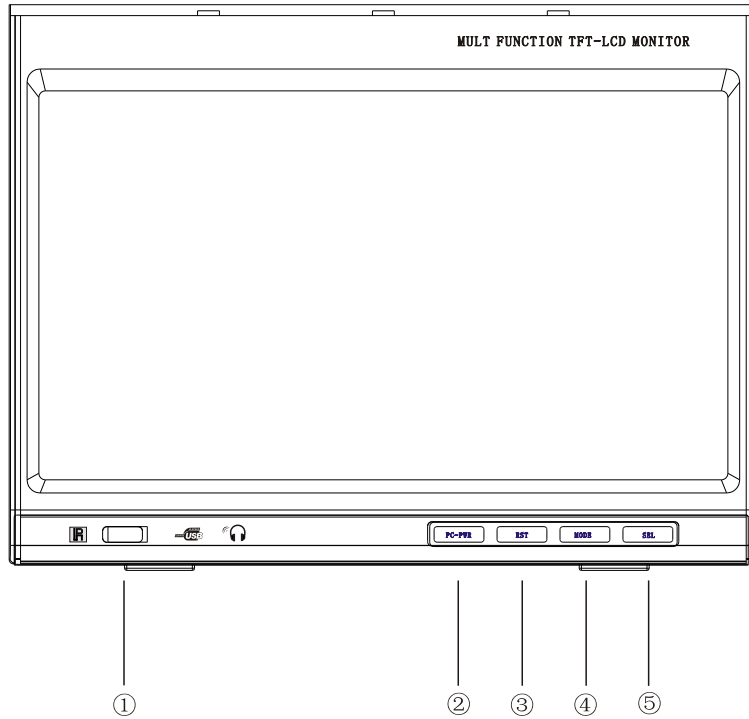
"Down" for being ON;

Round from Left is for Volume "-"

Round from Right is for Volume "+"

3

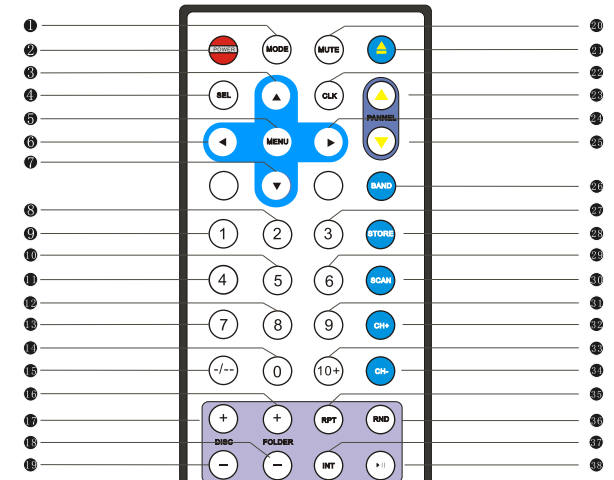
## Features of the Front Buttons:



- ①: Remote Window;
- ②: PC Power;
- ③: PC Reset;
- ④: Mode Switch;
- ⑤: Audio Select;

4

## Features of the Remote and Buttons:



- ① Mode Switch
- ② Power
- ③ Menu "UP"
- ④ Audio Select
- ⑤ Menu
- ⑥ Menu "-"
- ⑦ Menu "Down"
- ⑧ "2"
- ⑨ "1"
- ⑩ "5"
- ⑪ "4"
- ⑫ "8"
- ⑬ "7"
- ⑭ "0"
- ⑮ "Build-Up"
- ⑯ No Use
- ⑰ No Use
- ⑱ No Use
- ⑲ No Use
- ⑳ Mute
- ㉑ No Use
- ㉒ Calendar
- ㉓ No Use
- ㉔ Menu "+"
- ㉕ No Use
- ㉖ Band Switch
- ㉗ 3x3 grid
- ㉘ Storage for Radio
- ㉙ "6"
- ㉚ Search for Radio
- ㉛ "9"
- ㉜ Channel "+"
- ㉝ "10+"
- ㉞ Channel "-"
- ㉟ No Use
- ㊱ No Use
- ㊲ No Use
- ㊳ No Use
- ㊴ No Use

5

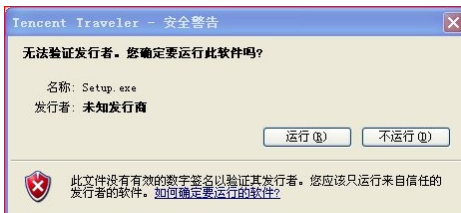
## 3、Start to Install:

Select Respond Operation System

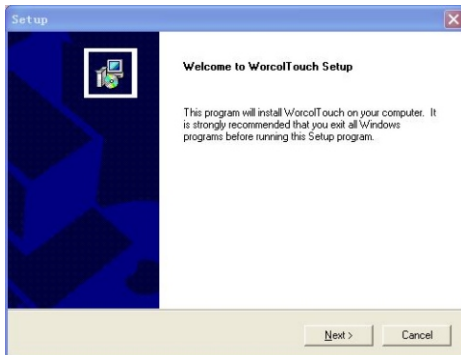
WINDOWS 2000/XP to Install:



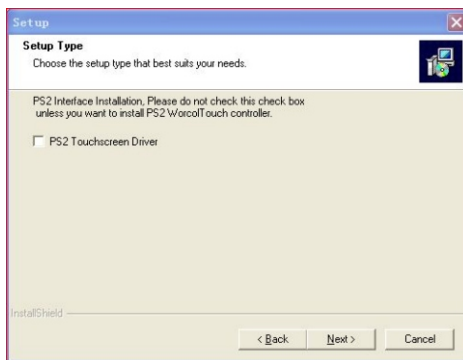
Select "Run" to Next Step:



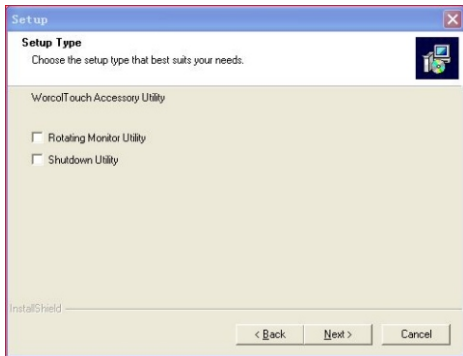
Select "Run" to Next Step:



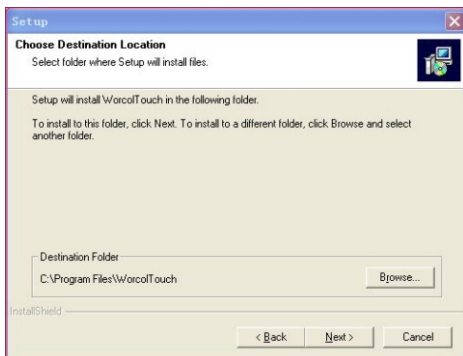
Select "NEXT" to Next Step:



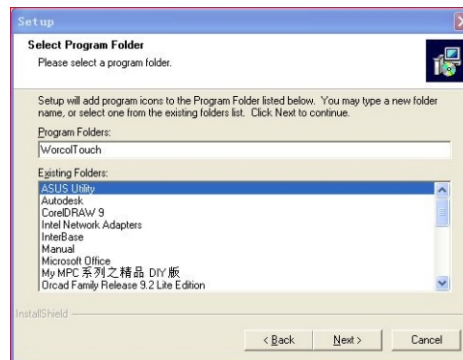
Select "NEXT" to Next Step:



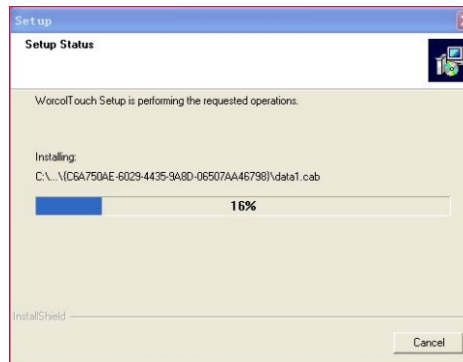
Select "NEXT" to Next Step:



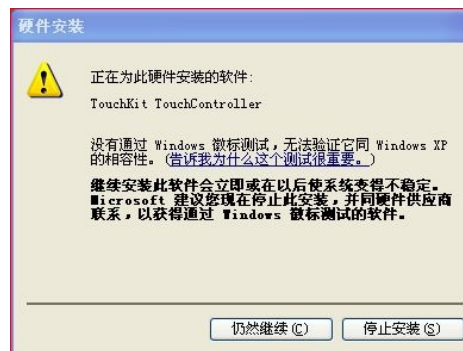
Press "Browse" or Tolerant Route to Intall then Press "NEXT" to Next Step:



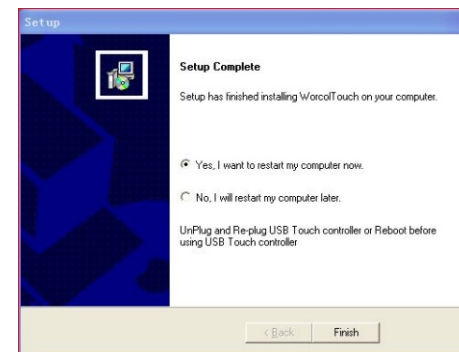
Select "NEXT" to Next Step:



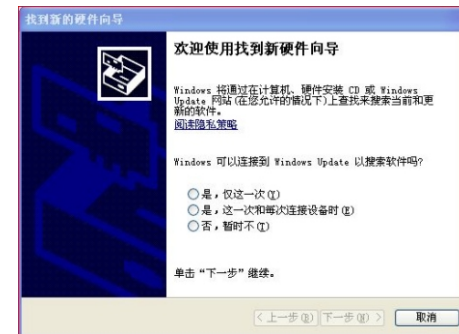
There will be following Image::



Select "CONTINUE" to Next Step:



Select "YES" to Restart the PC:



Select "NO" to Next Step to Continue to Install:



Select "Install from the Pointed Place of the List (Higher)" to Next Step:

# Operation of the Monitor

## ● Specification of the Monitor:

Item		Unit
Size	7	Inch
Type	Full Transmion	
Valid Area	155X87.12	mm
Pixel	854XRGBX480	Dot
Dot Distance	0.0605X0.1815	
Color Pixel	262K	
ViewAn gle	70	Degree
Contrast	>=450	
Brightness	>=400	cd/m2

## ● Display Mode of VGA Support :

Seq	Resolution	Renovate Rate
1	640X350	50
2	640X350	60
3	640X350	70
4	720X400	50
5	720X400	60
6	720X400	70
7	720X480	60
8	720X576	50
9	640X480	50
10	640X480	60
11	640X480	66
12	640X480	72
13	640X480	75
14	800X600	56
15	800X600	60
16	800X600	72
17	800X600	75
18	832X624	75
19	1024X768	60
20	1024X768	70
21	1024X768	72
22	1024X768	75

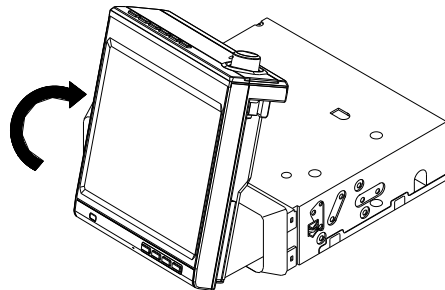
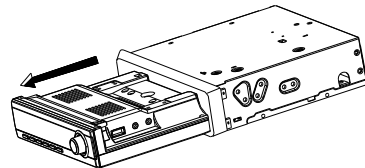
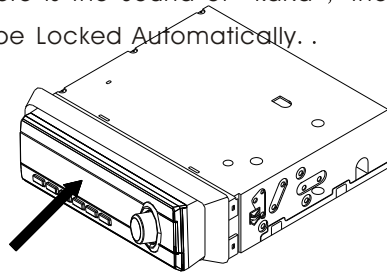
## 3. Open/Close Screen:

### ● Open the Screen:

As Follows, Push the Front of the Monitor Emphatically by Finger or Palm then Loosen the Finger after the Sound of "KaKa" then the monitor will Pop-up Slice.

Pull the front of the Monitor Emphatically to the end of Level by Hand then Turn over the Monitor to the Vertical Position.

If there is the Sound of "kaKa", the Monitor will be Locked Automatically. .

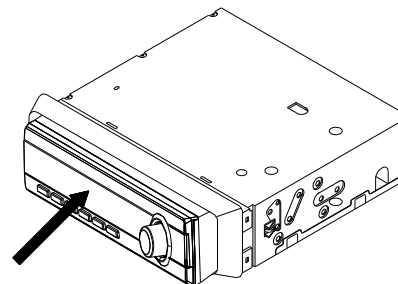
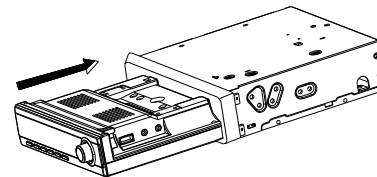
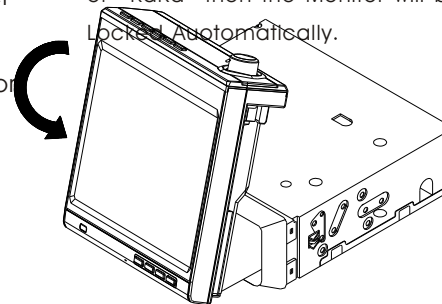


### ● Close the Monitor:

As Follows, Monitor can be Switched right and left.

Turn over the Monitor to Vertical Place then Tip it to Horizontal Place then Push the Monitor Emphatically by Hand into the Case.

Loosen the Finger after the Sound of "KaKa" then the Monitor will be Locked Automatically.



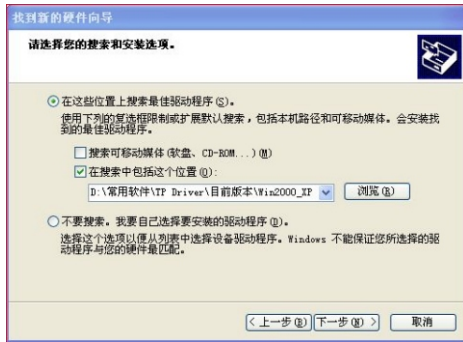
## ● Cautions:

- ①、 Pay attention to operate the monitor Mildly to Avoid Perpetual Damage.
- ②、 Don' t Touch the Panel by Hand when Open or Close the Monitor to Avoid the Disabled Touch panel for the Partial conglutination of the Touch Kit and ITO Film
- ③、 The Monitor should be Pull Flatly when Close the Monitor to Avoid Scrape of the Crust or to Enter into the Case.

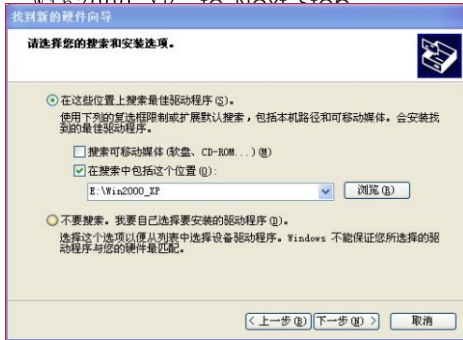
●Auto Display when Backing a Car Monitor will has Rearview Function if Connect the Camera with Reverse Control Cable Correctly according to the requirement (attached Connection) . Monitor will be on auto and switch the Display Image to be Camera. Monitor will come back to the Primary State after Completing the reverse.

### ●Auto Switch for Being on:

As long as Connect the Control Cable and Audio Input Port Correctly (Attached Drawing) on the Condition of Being ON of the Monitor, If any Call in, Audio will Auto Switch into the Audio Input Port of Telephone to be Convenient to Answer the Phone.

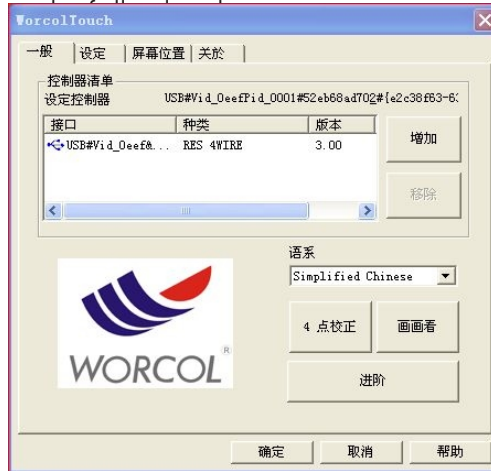


Select "Including the Place when Searching" at the Entry of "Search the Best Drive Procedure" then Press "Brows" to change the Route to "Win2000\_IP" to Next Step

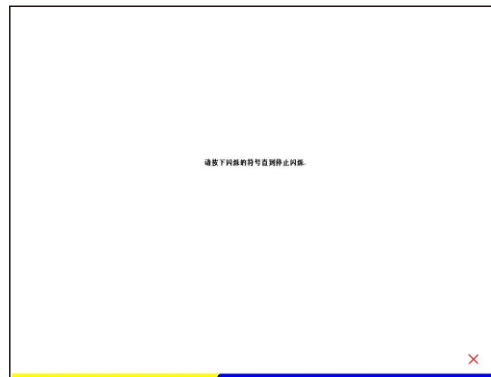


Press "Finish" to Complete the Control of the Touch Panel and the Installation of the Applied Soft

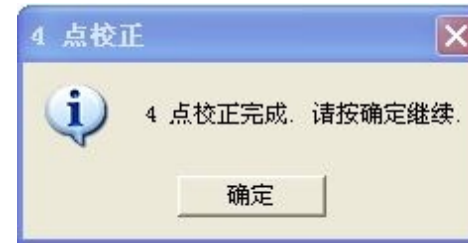
- Calibration of the Touch Panel:  
Calibrate the Touch Panel after Completing the Drive.  
Start the "Worcolto-uch"



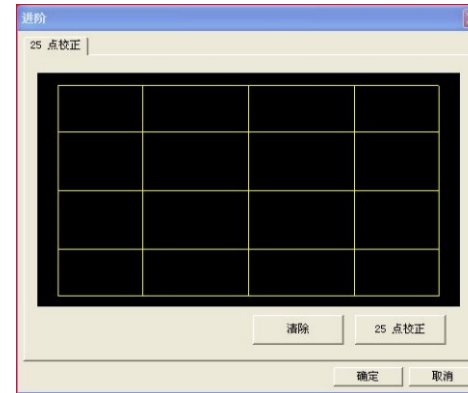
Press "4 Dot Cal" to Enter the Image:



Press the Flickering Dot by Touch Pen until Flicker Stopped:



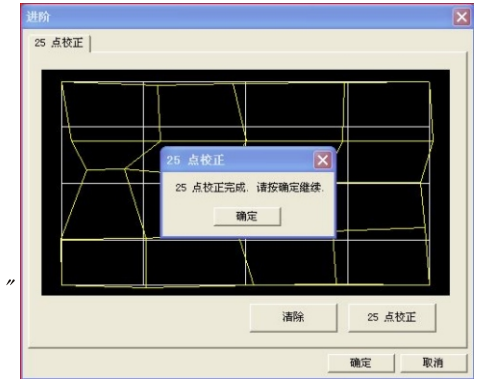
Press "Sure" to Complete the "4 pts Cal"  
Press "Advanced" to enter the more Clear Calibration Image:



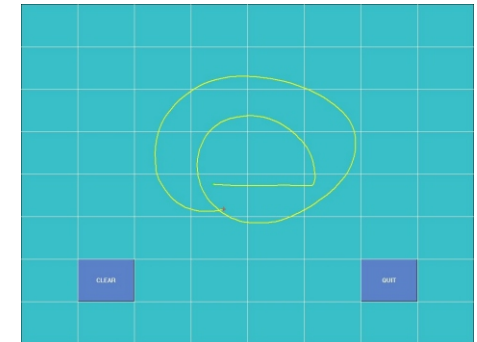
Press "25 pts cal"



Press the Flickering Dot by Touch Pen until Flicker Stopped:



Press "Sure" to Complete 25 Pts Cal  
Press "Browse Image" to Check the Result



Users can Check the Linearity and Accord by Drawing any Image Such As Above.  
Press "Clear" to Cancel all Image then Press "QUIT" to Exit the Image

## ON-OFF Control of Car PC

Connect the Control Cable of Car PC with High Level  $\geq 3V$  for Opening and Low Level  $\leq 0.2V$  for Closing Correctly according to the Requirement (Such as the Device Connect Drawing Attached at the End).

Monitor will Display the Hint of being on of PC by Pressing the PC-PWR Key then High Level will be Inputted by Control Cable of PC-ON to Control the PC-ON or no Any Action. Monitor will Display the Hint of Being OFF of PC by Pressing the PC-PWR then Press the PC-PWR again, the PC will be Closed.

## ●Reset Control of Car PC

Connect the Reset Control Cable of Car PC which is with the High Level Reset Function The Hint of Monitor will be Displayed by Pressing the RST of the Front Case needed Requirement then Press the RST again to Reset the Car PC.

## Cautions:

- The Touch Panel is Used for Car PC without any other Function to Control the Machine.
- Users should connect the Touch panel Control with USB cable of Car PC Correctly and Install the right Drive well before Using the Touch Panel Function.
- Users should Calibrate and Set before Using Touch Panel Function. Users should Calibrate and Set again after Using some Time Normally (Such as half a Month) or any Warp for the Touch Panel with Image. Please Calibrate every Half a Months to Make Sure the Warp is within the Allowable Range.
- Following Installation and Calibration of CD Drive of touch panel is VERSION3.1.4.2201 The CD Drive Soft of other Section will be Some Difference for Installation and Calibration. Please be Patient to Install Corresponding Section to Install and Calibrate.
- Don't Touch the Panel Directly by Hard Thing or Nail to Avoid the Scrape of the Panel. Operate the Machine by being Attached Touch Pen
- Clean the Touch Panel by Soft Cloth to Avoid the Scrape of the Pane. Don't Clean the Touch

## ●Installation of the CD Drive:

Start the Car PC after the Confirmation of the Correct Connection. Install the Drive of the Touch Panel if it can Run Natural. Take WINDOWS XP an Example to Introduce the Installation.

### 1、The PC will Display the New USB Device



Pls Choose "Cancel".

### 2、Put the Attached CD Drive into the DVD-ROM of the PC. If DVD-ROM Set the Function of Auto Fun, it is as Follows:

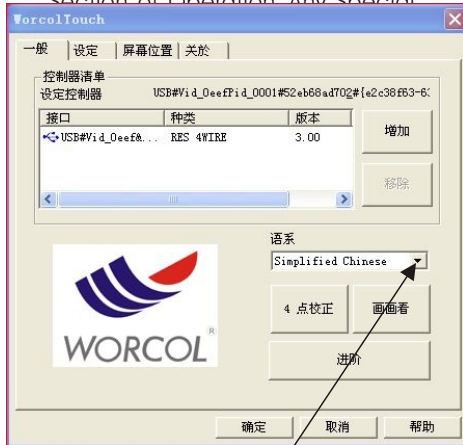


If DVD-ROM Has no Auto Fun Function, Double Click the "RUN. EXE" Files in the Root Directory of the CD-Drive then the Windos also will be As Above.

# Operation of the Touch Panel

## ● Language Select:

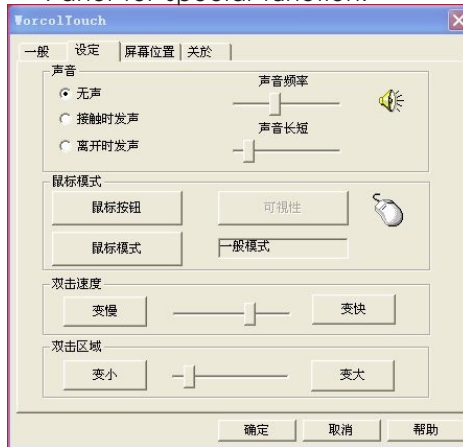
Drive Support Ten Kinds of Languages Such as English、French、German、Simplified Chinese、Traditional Chinese、Japanese、Korean and So on. Procedure Select the Optimun Language Automatically According to the Different Section of Operation Any Special



Press the Down-Menu to Select the Relevant Language then the Windows will be the Selected Language Automatically.

## ● Set of the Touch Panel:

Users Select "Set" Entry to Set the Touch Panel for special function:



"About" Entry Display the Section Number of the Drive and the Company's information:

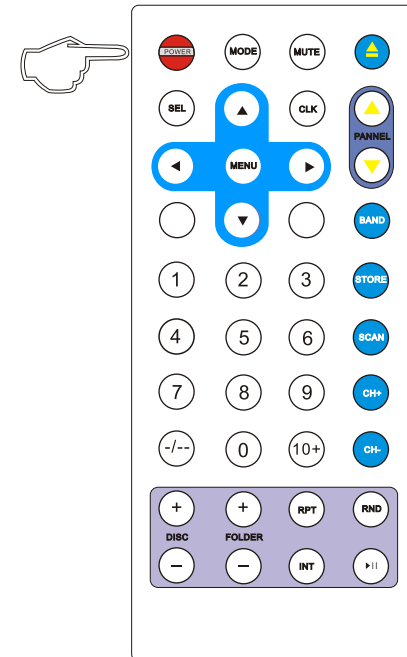
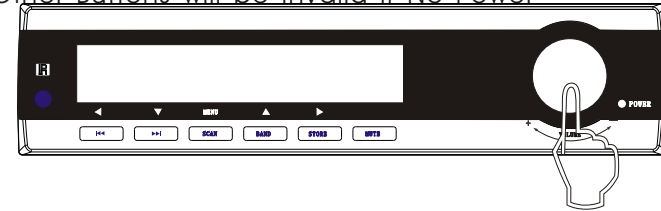


# Features

## ● Open/Close

### ● Open :

Press the Power of the Front Panel or the Remote when the Machine is on then the Machine will Run. The Other Buttons will be Invalid if No Power



### ● Close :

Press the Power on the Condition of Being ON then the Machine is closed.



## ● Mute Control :



Press the "MUTE" of the Front Panel or the Remote to Close the Output of the Amplifier to be in MUTE State Press "Mute" again then Renew Amplifier Output

### Cautions :

- Adjust the Volume or Sound can Cancel the Mute and Renew the Output of Amplifier when in Mute State.

## ● Display Mode Select :

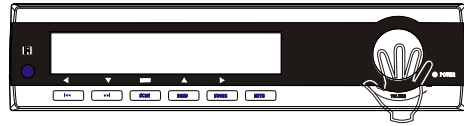
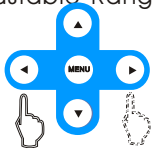
There will be "MUTE" Signal in the TFT Panel when in MUTE State Switch the Program of Being on Play by Pressing the MODE of the Front Panel or the Remote;

Circle Switch by AV1 - AV2 - RADIO - VGA - AV1



## ● Volume Adjustment :

Adjust the Loud and Lower of the Volume by Rounding the Power Button from Right-Left or Pressing the "+" and "-" of the Remote; the Adjustable Range is from 0 - 100.



## ● Sound Control :

Adjust the "alt" "bourdon" and Right-Left balance according the section of the operation in the Menu

## ● Mode Select :

Users can Select the Mode by Pressing the "SEL" of the Front Panel or the Remote in the VGA Mode Circle Switch by AUDIO1 - AUDIO2 - RADIO - AUDIO3 - AUDIO1

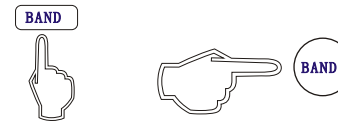


## ● Band Select :

There are two kinds Band Switch Control Mode; One is Shortcut Key Mode, the Other is Menu Control Mode

### ◆ Shortcut Key Mode:

Press the "Band" of the Front Panel or the Remote to Circle Switch from AM-FM Band.



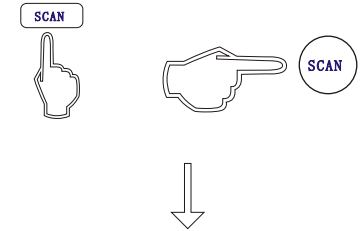
### ◆ Menu Control Mode:

Select Band Entry after Entering into the Radio Menu then Press "+" or "-" to Switch the Band to Circle Switch by AM-FM-AM.

收音	
波段	FM
频道	13
频率	87.5MHZ
方向	向上
转存到	13
保存	0
- [Progress Bar] + 0%	

## ● Auto Tune:

OSD will Display the Main Menu by Pressing the "SCAN" of the Front Panel or the Remote Control at the Radio Mode



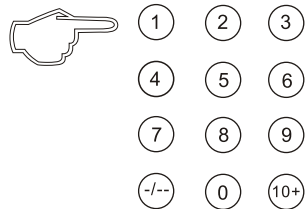
收音	
波段	FM
频道	13
频率	87.5MHZ
方向	向上
转存到	13
保存	0
- [Progress Bar] + 0%	

System will Store the Broadcast Which is Searched Automatically from Low to High by Frequency to the Channels from 0-99 by Low to High. System will Have no Reaction for Any Operation for the Some Second during Searching.

## ● Display Set Memory in Advance

### ◆ Display Shortcut Digit Key:

Skip to the Broadcast Appointed Set Memory in Advance by Pressing the Digit Key of the Remote Control



Operation is Following:

◇ 0 – 9 Channel: Press Respond Digit Key Directly,

Such as Channel 6

◇ 10 – 19 Channel: Press "10+" then Press Single Key.

Such as Channel 13:



◇ 20 – 99 Channel: Press "-/--" Key

then Tens Digit then Single Digit

Key. Such as Channel 67:



## ◆ Skip of the Channel:

◇ Shortcut Key: Skip the Channel by Pressing the Skip Key of the Front Panel or the Remote Control:



: Down Channel

: Up Channel

: Down Channel

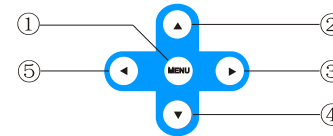
◇ Menu Operation:

Skip the Channel by Pressing the "+" or "-" of the Menu at the Entry

收音	
波段	FM
频道	13
频率	99.8MHZ
方向	向上
转存到	25
保存	NO
-	+ 0%

## ● Operation Flow:

The Menu Operation is Mainly Operated by the "MENU" and "Up, Down, Right, Left" Key.



- ①、Menu Key
- ②、Up Key
- ③、□+ Key
- ④、Down Key
- ⑤、□- Key

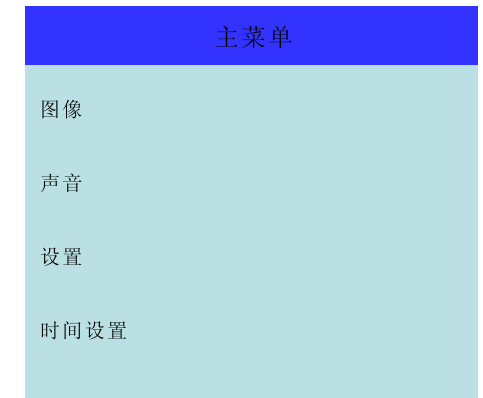
## Step:

- (1): Press "MENU" Key to Enter Menu.
- (2): Press "Up" or "Down" to Select Submenu Needed to Adjust.
- (3): Press "+" or "-" to Enter Submenu
- (4): Press "Up" or "Down" to Select Entry Needed to Adjust.
- (5): Press "+" or "-" to Adjust the Spec.
- (6): Press "Menu" to Back to Main Menu.
- (7): Press "Menu" to Exit OSD after Adjusting the Spec or the System

Will Exit Automatically Within Five or Six Second.  
OSD Menu will be different in Different Mode, Such as AV Mode, VGA Mode, Radio Mode.

## ● AV Mode:

Main Menu will be on Screen by Pressing Menu Key in the AV1、AV2 Mode:



There are Four Entries, Such as "Image, Sound, Set and Time Set".

Select the Entry Needed to Adjust by Pressing the "Up" or "Down" then Enter into the Respond Submenu by Pressing "+" or "-" to Adjust.

## ● Image:

Submenu of Image is Following:

图像	
亮度	50
对比度	60
色度	60
锐度	50
色调	0
-	+ 60

## Manual Tune:

There are two kinds of Tuner, One is Shortcut Tune Mode, the other is Menu Tune Mode. Operation is Different.

### ◆ ShortCut Key Manual Tune Mode:

System won't Stop Searching from the Current Frequency Until the Valid Broadcast Searched at the Radio Mode on the Condition of **SCAN** Panel then Display the Valid Broadcast.

### ◆ Menu Manual Tune Mode:

Enter into the Radio Menu at the Radio Mode then Select "Direction" Entry then Press the "+" or "-" of the Menu so that the Receipt Channel will Change Step by Step Until the Anticipant Receipt Frequency.

收音	
波段	FM
频道	13
频率	87.5MHZ
方向	向上
转存到	13
保存	OK
-	+ 0%

● Set Memory Broadcast Automatically System will Search the Valid Channel whose Signal Intensity has been Reached the Requirement from Low to High According to the Frequency at the Auto Tune then Store the Channel Set in Advance by Serial Number.

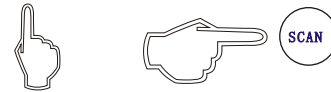
Display the Broadcast from the Channel Set in Advance by Pressing Digit Key.

◆ Manual Set Memory in Advance: There are 100 piece Channel Set in Advance From 0-99 for AM and FM.

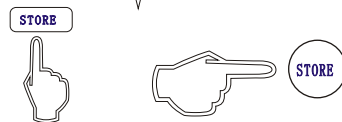
### ◆ ShortCut Key Set in Advance Mode:

Users only Need to Press the "Store" Key of the Front Panel or the Remote Control to Store the Valid Channel of the Broadcast

Requirement When Press the "Scan" Key



Valid Broadcast Searched



Store the Broadcast to Current Channel

## ◆ Menu Operation Set in Advance

①: Select "Direction" Entry then Tune the Broadcast to the Channel Met Anticipant by Pressing the "+" or "-" of the Menu at the Menu Mode.

收音	
波段	FM
频道	13
频率	99.8MHZ
方向	向上
转存到	13
保存	OK
-	+ 0%

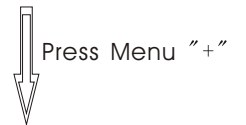
②: Press the "Save as" Entry then Press the "+" or "-" Key to Set the Channel, Such as 25.

Cancel this Procedure if the User

收音	
波段	FM
频道	13
频率	99.8MHZ
方向	向上
转存到	25
保存	NO
-	+ 0%

③ Select the "Save" Entry by Pressing the Down Key then Press "+" then he Current Channel will be Stored to Appointed Channel if the "Save" Entry Display "OK".

收音	
波段	FM
频道	13
频率	99.8MHZ
方向	向上
转存到	25
保存	NO
-	+ 0%



收音	
波段	FM
频道	13
频率	99.8MHZ
方向	向上
转存到	25
保存	OK
-	+ 0%

# Operation of the Menu

## ● Set :

Submenu Set as follows :

Set	
Language	Chinese
Grounding	7500K


There are Two Entries "language and Grounding":

Language: Adjust the Language of the OSD Display

Grounding: Adjust the grounding of the Monitor Display

## ● Geometrisch

Submenu of the Geometrisch

几何设置	
行中心	24
场中心	50
时脉	50
相位	14
-  + 24	

There are Four Entries totally :

W-Position: Adjust the Right-Left of the Image

S-Position: Adjust the UP-Down of the Image

Taktfrequenz: Adjust the Display Wide of Right and Left of the Image

Phase: Adjust the Display Result of the Image

## ● Info

Info Menu

信息	
分辨率	1024X768
行频	48.5KHZ
场频	60.2HZ

Display the Info of the Current Input of VGA

Resolution: Display the Resolution of the Input Signal

H-Frequency: Display the H-Frequency of the Input Signal

V-Frequency: Display the V-Frequency of the Input Signal

# Connect of the Device

## Cautions :

- Install the Voltage Fall Device before Installing in the Track or Bus with 24V for being Used in the Car with 12V and Grounding in Cathode.
- Cut the Cathode Cable of the Battery before installing to avoid the short circuit of the machine
- Don't fix the Cable of Machine near the Removable Part of the Car, Such as Grip, Brake, Gearlever, Seat fixed Navitrack and So on.  
Don't Fix the Cable of the Machine near the Heat Area, Such as Caliduct for Let or Heat will Cause the Melt of the Insulative Cable or Damage to Cause the Shortcircuit of the Car.
- Don't put the Yellow Power Cable Cross the Save Hole into the Engine House then Connect the Battery to Avoid the Damage of the Power to Arose the S
- Use the Stated Fuze (10A) to Exchange the Burned-out Fuze.  
Use the Fuze with High Capacity to Exchange the Burned-out Fuze or Connect without any Fuze will Cause the Fire or Damage of the Machine.  
Any Problem After Exchanging the Fuze, Contact with Repair Center.
- Don't Connect the Power Cable of other Device to the Machine to Avoid the Fire or too hot for Overfreight.
- Wrap Untapped Cable of the LoudSpeaker with Insulating Tape to Avoid the Short Circuit.
- Insulate any Exposed Cable then Pack all the Cable to Avoid the Touch Between Connection Port and Metal Part of the Machine.
- Connect the Fire Lead to on "Open/Close" of the Power by Using the Fire Switch Key if there are no ACC Place in the Light of the Car.
- Don't Connect the Output Port of Loudspeaker to Avoid the Damge of the Amplifier.  
Don't Use the 3-Wire Loudspeaker.  
Don't Connect the Cable of the Loudspeaker to the Car.
- The Power of the Loudspeaker should be High-Power with the Least Rating of 50W and 4-9 Ohm for Impedance.  
Don't Connect the Cable of the Loudspeaker out of the Range of the Impedance to Avoid the Short Circuit or Damage of the Loudspeaker.

# Operation of the Menu

There are Five Entries such as “Brightness、Contrast、Color、Nett、Hue” .

Select the Entry Needed to Adjust by Pressingthe “Up” and ” Down” then Press the “+” and “-” to adjust the specification

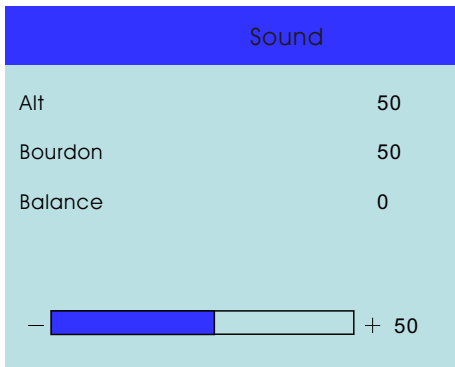
Brightness: 0-100

Contrast: 0-100

Color: 0-100

● Sound Adjust the Image

Hue Adjust the image



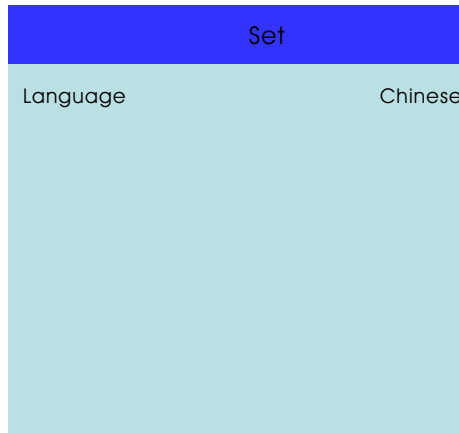
There are three Entries such as “ Bass 、 Treble 、 Balance ” to adjust :

Bass:Adjust the Bass Volume from 0-100 and the Windows Default is 50

Bourdon:Adjust the Treble Volume from 0-100 and the Windows Default is 50

Balance:Adjust the Balance of the Left-Right Channel for Amplifier

● Set: and the Windows Default is 0.



Select the OSD Lanugage According to Requirement.

● Time Set :

Submenu of the time set :



There are four Entries such as “ Clock Mode 、 Date 、 Week 、 time 、 Save ” .

Press “ok” at the entry of “save” after adjusting then all adjusted

specification can be saved.

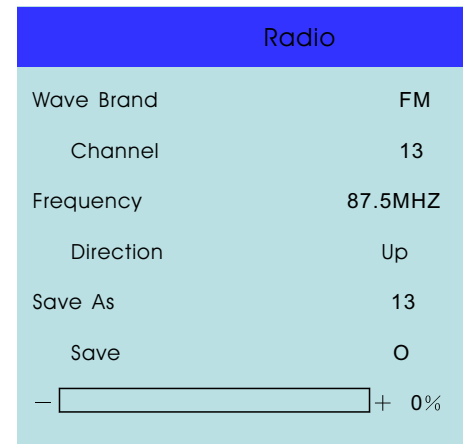
Press “Menu” to exit then the entry

of “time set” will be valid

# Operation of the Menu

● RADIO mode :

There are only one main menu at the RADIO mode without any Submenu.



Brand : AM-FM-AM switch circularly

Channel:there are 100pcs from 0 to 99 storage place for AM/FM each

at the current display

broadcast storage place

Frequency : Current Broadcast frequency

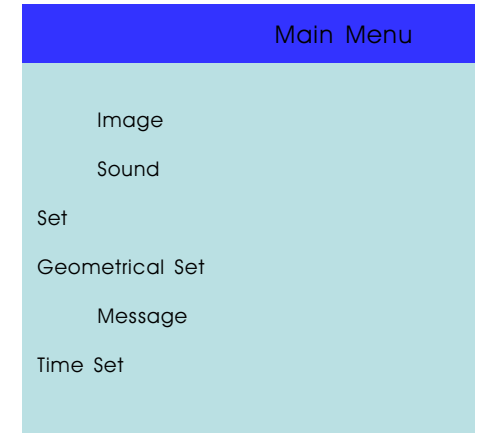
Direction : Direction of the frequency

Save As : The Appointed place of Save

● VGA Mode: yes or no

Interface of the Main Menu

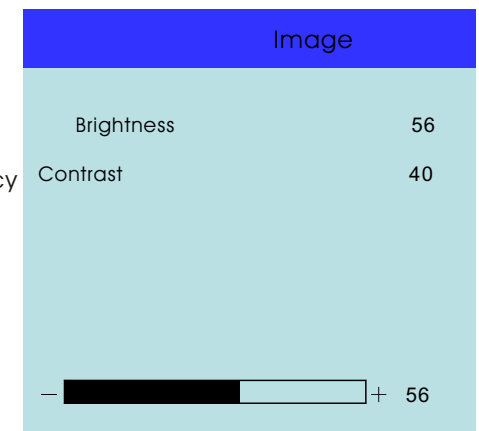
at the VGA Mode as follows :



There are Six Entries such as “Image 、 Sound 、 Set 、 Geometrisch 、 Info 、 Time Set”. The adjust of time set and Sound is the same Adjustment in the

● Image: Other set is as follows

Submenu of the Image as follows

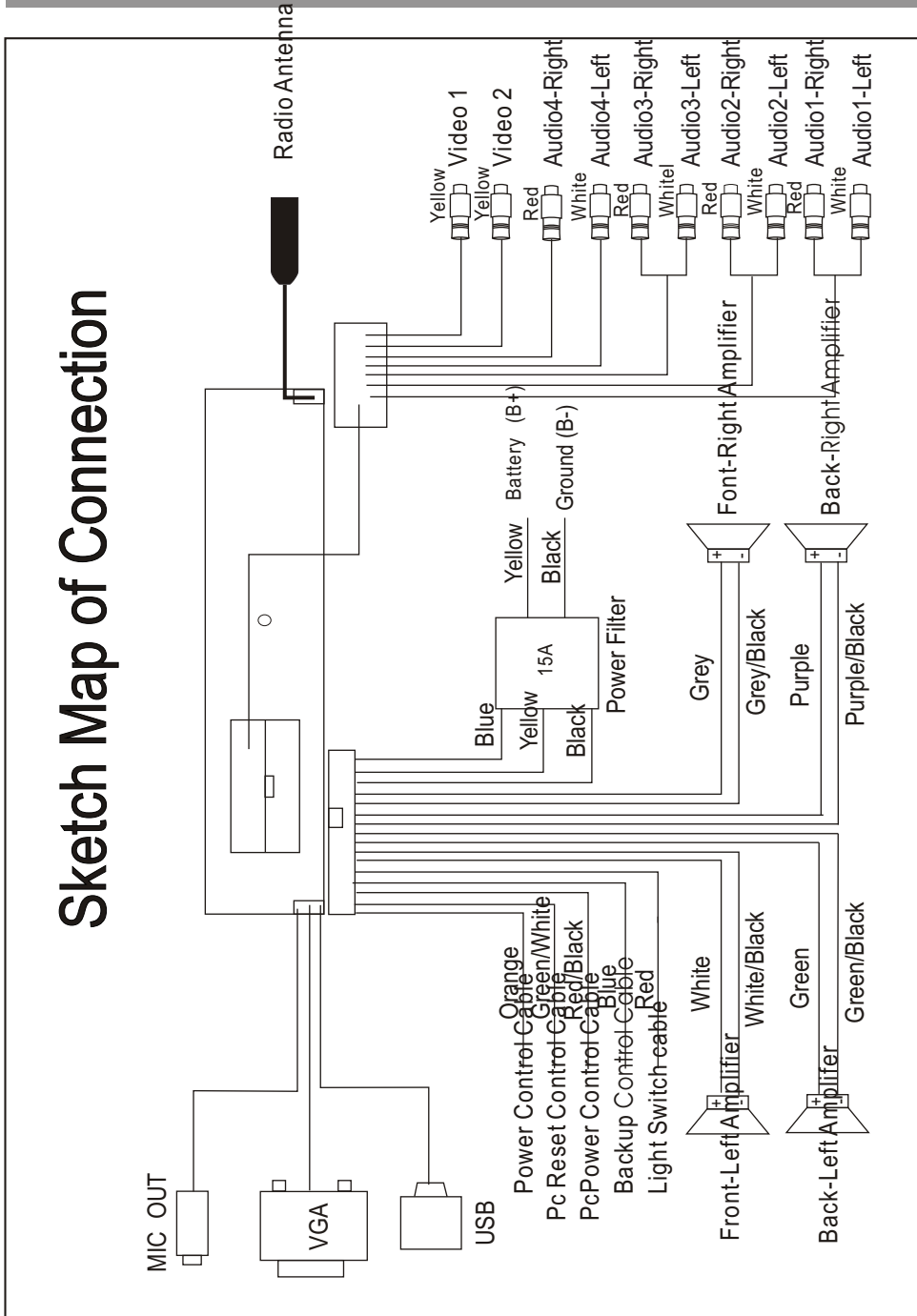


There are two Entries “brightness 、 contrast

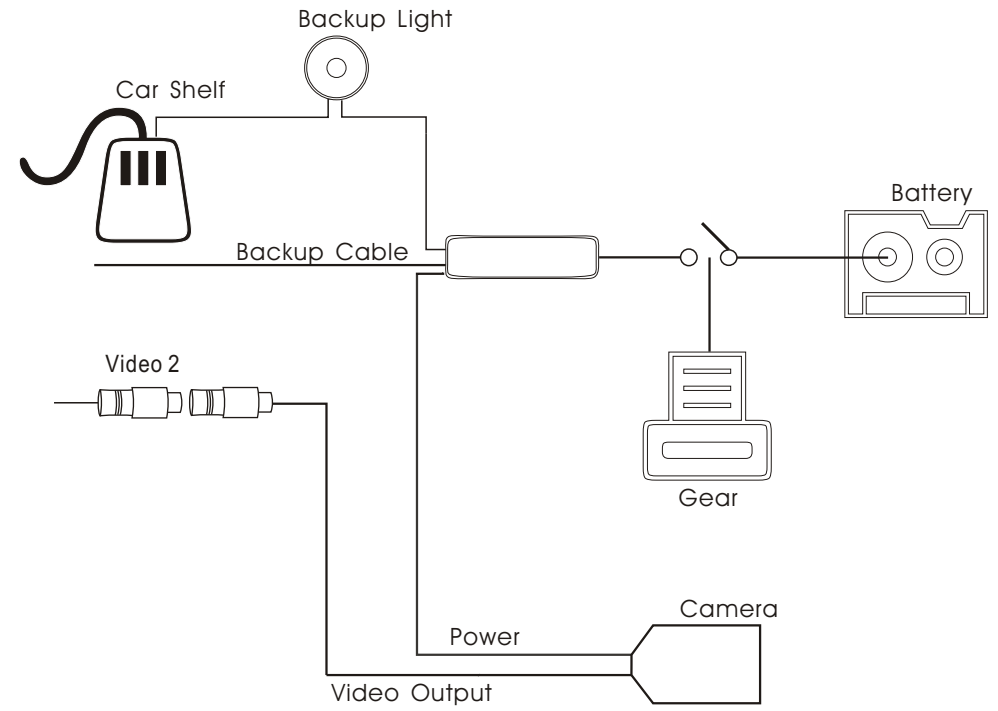
Brightness:Adjust the Brightness from 0-100

Contrast : Adjust the Contrast from 0-100

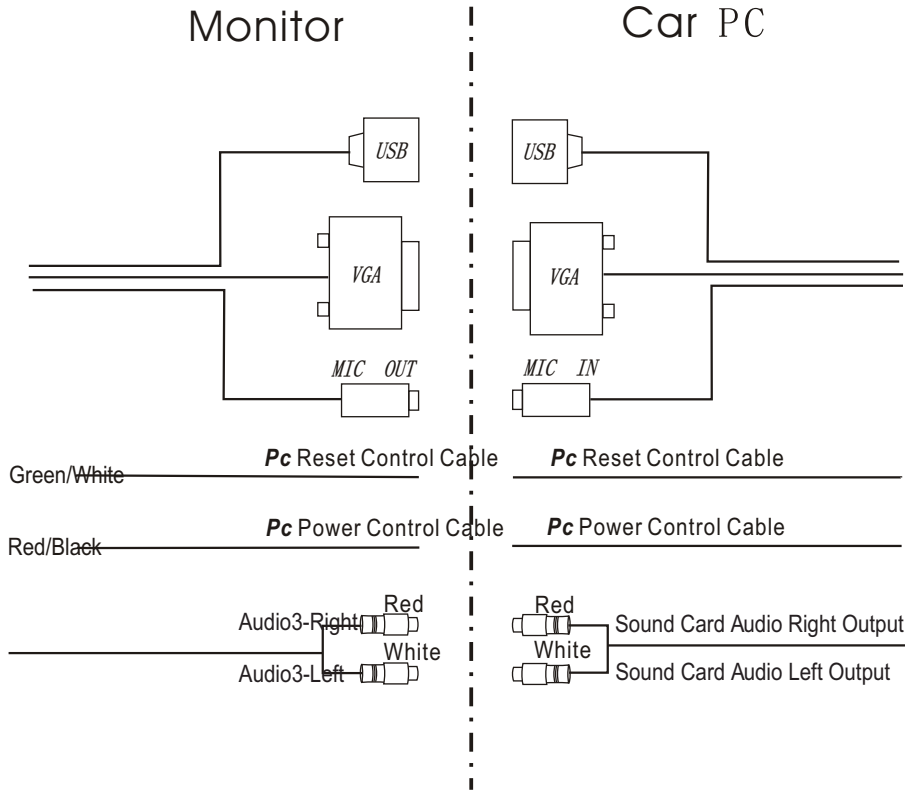
# Sketch Map of Connection



● Connect of Backup Control Cable :



## ● Connect of Car PC :



## ● External Port :

There are three External Port for being Used by the client

◇ USB 2.0 Port : External USB Device , Such as U Disk 、 USB Mouse 、 Mobile Hard D

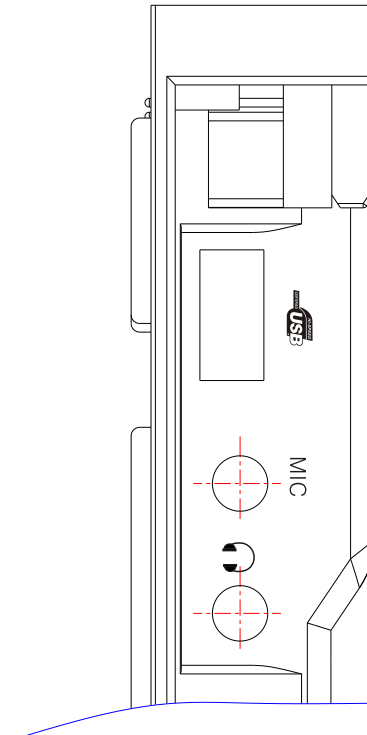
Caution : The Max Current is 1A for USB port.

If the working current of USB Device is over 1A, please don't connect to USB port

◇ MIC Port : External MIC Port can be connected to Car PC Directly.

◇ Earphone Port : External Earphone

Cautions: Car Amplifier will be in Mute state when Plug Earphone into



## Specification

### 1、AM Part :

Seq	Item	Test Condition	Spec	Unit
1	Sensitivit	S/N=20dB	23	dBu
2	SNR	1KHz 30%	38	dBu
3	Distortion	1KHz 30%	2.5	%
4	Frequency	74dBu Input	50Hz +3	dB
			4KHz -15	dB

### 2、FM Part :

Seq	Item	Test Condition	Spec	Unit
1	Usable Sensitivity	S/N=30dB	6	dBu
2	SNR	Stero 60dBu Input	55	dB
3	Distortion	MONO 60dBu 1KHz Input	1.5	%
		STEREO 60dBu 1KHz Input	2	%
4	Frequency	60dBu Input	100Hz -1	dB
			10KHz -14	dB
5	Stereo Separation	60dBu Input	30	dB

### 3、Audio Part :

Seq	Item	Test Condition	Spec	Unit
1	Currency Plus		26	dB
2	Output Power	THD=10%	18	W
		THD=1%	14	W
3	Distortion	P <sub>o</sub> =4W	0.04	%
4	MUTE Attenuation		90	dB
5	Power Press		65	dB
6	Mute Currency		300	Ma

## Specification of the Machine

### 4、Monitor Part :

Seq	Item	Test Condition	Spec	Unit
1	Viewing Angle	CR≥5	Left 70	Deg.
			Right 70	Deg.
			Up 70	Deg.
			Down 70	Deg.
2	Contrast		450	
3	Brightness		400	cd/m <sup>2</sup>
4	Respond Time		8	Ms
5	Viewing Area		155X87	mm
6	Viewing Dot		800X480	Dot
7	Dot Distance		0.06X0.18	mm
8	Color		262K	Kinds

### 5、Common Specification :

Seq	Item	Spec	Unit
1	Rated Working Voltage	14.4	V
2	Range of Working Voltage	9.5 to 16	V
3	Most Working Current	10	A
4	Working Temperature	0 to +60	°C
5	Storing Temperature	-20 to +75	°C
6	Working Humidity	40% to 80%	RH
7	Storing Humidity	30% to 90%	RH

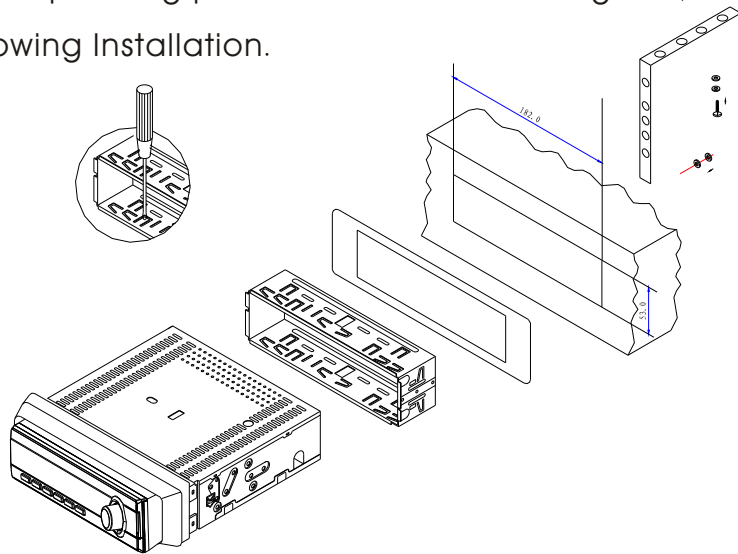


## ● Cautions :

- ◇ Make Sure Device Connected Correctly according to the Manul before Dismantling
- ◇ Use the attached parts to make sure the Correct Connection.
- ◇ Fix all Flexible power before installing.
- ◇ The Machine should be installed flatly. Face upward some angle in order to be used convenient but not too much
- ◇ Connect the Power from Cathode of battery

## ● There will be some Sparkle If connected from Anode of Battery. muzzleloading Mode ( Tank-Bucket Installation ) :

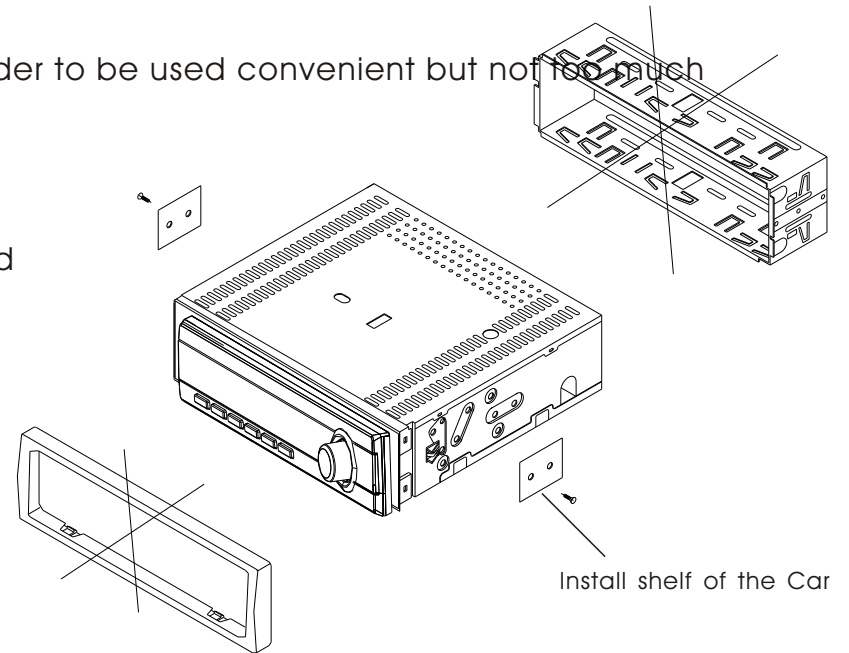
If there are 1 Din Tank-Buck Installation in instrument panel of the car and the fireproofing panel can fix the installing Bolt, Choose the Following Installation.



- ① . Dismantle the Installing Tank-Bucket from the Machine then Install into Relevant Rotate of the car and fix.
- ② Screw the M5 Bolt into screw of the radiator then Screw tightly clockwise.
- ③ Install the machine into the Tank-bucket then fixe the Pontil on the fireproofing by attached screw.

## ● Breech-Loading :

Dismantling the Tank-Bucket and ornament frame This two kind is of no use.



- ① . Put the the machine into the install shelf then adjust the place of the machine according to the place of the install shelf of the car to make the front panel and instrument panel ordely.

It will be ok after fixing the machine into the install shelf by 4 pcs Bolt of M5\*6

