

Inedu

Tablet Quick Guide

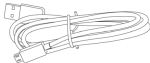
Thank you for choosing the Tablet Inedu. This portable device is designed to take advantage of micro-mobility and direct interaction through touch/pen input and wireless connectivity (Wi-Fi/Bluetooth) to provide distinct and different use experience for both study and entertainment.



Package Contents

Your package should contain the Tablet you purchased along with the following items. If anything is missing or appears to be damaged, please contact your vendor or agent.

- | | |
|--|---|
| <input type="checkbox"/> Quick Guide | <input type="checkbox"/> Capacitive Pen |
| <input type="checkbox"/> USB Cable | <input type="checkbox"/> Macro Lens |
| <input type="checkbox"/> Power Adapter | <input type="checkbox"/> Thermal Probe |



NOTE:

The package contents above are for reference only. Please take the actual package items as standard

Specification

Processor

- Intel® Atom™ processor Z2460 1.6GHz

LCD Display

- 10.1 inch (16:10), 1280X800 TN LCD

Touch Panel

- 5-points capacitive touch panel

Storage

- 16GB Flash Memory

Input/ Output (I/O)

- 1 x TF/Micro SD card slot
- 1 x Micro USB2.0/OTG port without charging status (Type A/B)
- 1 x Mini HDMI type C
- 1 x MIC/Headphone Jack combo (American type)
- 1 x DC-IN Jack

System Memory

- 1 x LPDDR2, 1GB

TF/Micro SD Card

- Support 128M~32GB TF/Micro SD card

WiFi/BT

- 802.11 b/g/n, 2.1+ EDR

Camera

- 2 x cameras (Front: 0.3M, Rear: 2M)

Stereo Speaker

- 2 x internal stereo speakers

Battery

- lithium polymer, 3.7V, 6600mAh
- Video play: 6 hours
- Music play: 10 hours
- Wi-Fi: 6 hours (with speaker)

Power Adapter

- Input: 100-240V ~ 50/60Hz 0.3A
- Output: 5V $\overline{=}$ 2A $\text{O} \leftarrow \ominus$

Tablet Weight

- 685g

Dimension

- 272.9 mm (W) X 174.4 mm (H) X 13.2 mm (D)



NOTE: All specifications are subject to change without notice. All rights reserved legal notices privacy and trademarks.

Thermal Probe and Macro Lens User Guides



Thermal Probe User Guide

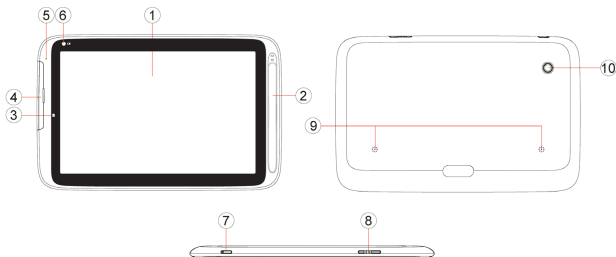
1. Open the SPARKvue part of Intel® Education Thermal Probe Software.
2. Insert one end of the thermal probe head into the Headphone Jack of the tablet, the other end into the object under test, the temperature of the object can be read on the Thermal Probe Software.



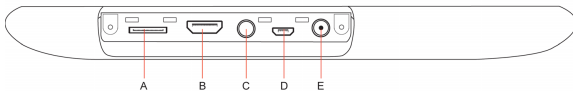
Macro Lens User Guide

1. Install the Macro Lens to the rear camera.
2. Open the rear camera software of the tablet, focus the lens on tiny objects, it can create images of tiny objects.

Interface Introduction



NO.	Item	NO.	Item
1	Touch Panel	6	Front Camera
2	Capacitive Pen Slot	7	Power Button
3	Charging Indicator	8	Volume Up/Down Button
4	I/O Protective Cover	9	Speakers
5	Front Microphone	10	Back Camera



NO.	Item	NO.	Item
A	TF/Micro SD Card Slot	D	Micro USB Port
B	Mini HDMI Port	E	DC-IN Jack
C	Headphone Jack	--	--



NOTE:

Due to the system design limitation, if the tablet is connected to computer by Micro USB, please pull up the USB cable before turning off the tablet.

Turn On/Off the Tablet

Turn On the Tablet

Press and hold the Power button on the top left side of the tablet for about 3 seconds.

Turn Off the Tablet

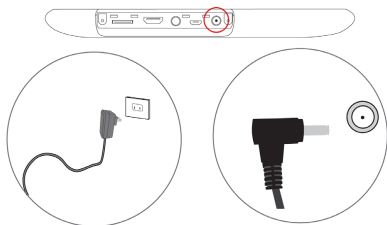
1. Press and hold the Power button until the options menu appears on the screen.
2. Tap OK on the Power Off option menu to turn off the tablet.

Charging the Battery

Before using your tablet for the first time, you must fully charge the battery.

Steps:

1. Insert the Power Adapter into a standard AC power outlet.
2. Connect the Power Adapter to your tablet.



Installing the Storage Card

You can choose the TF/Micro SD cards in a wide range of capacities, varying from 128M to 32GB.

Install TF/Micro SD Card

1. Open the I/O protective cover
2. Locate the slot for the TF/Micro SD card
3. Insert the TF/Micro SD card gently



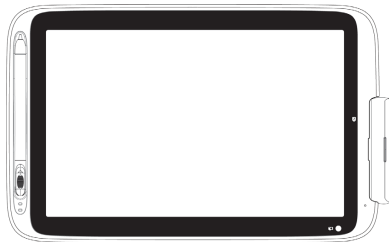
FRONT



BACK

Remove TF/Micro SD Card

1. Open the I/O protective cover
2. Turn off the tablet or Tape (Menu>Settings>Storage>Unmount SD card)
3. Push the TF/Micro SD card to eject from the slot
4. Pull out the TF/Micro SD card



Note:

Please insert the TF/Micro SD card in the correct direction. Insert in incorrect direction may result in the damages for both tablet and the TF/Micro SD card.